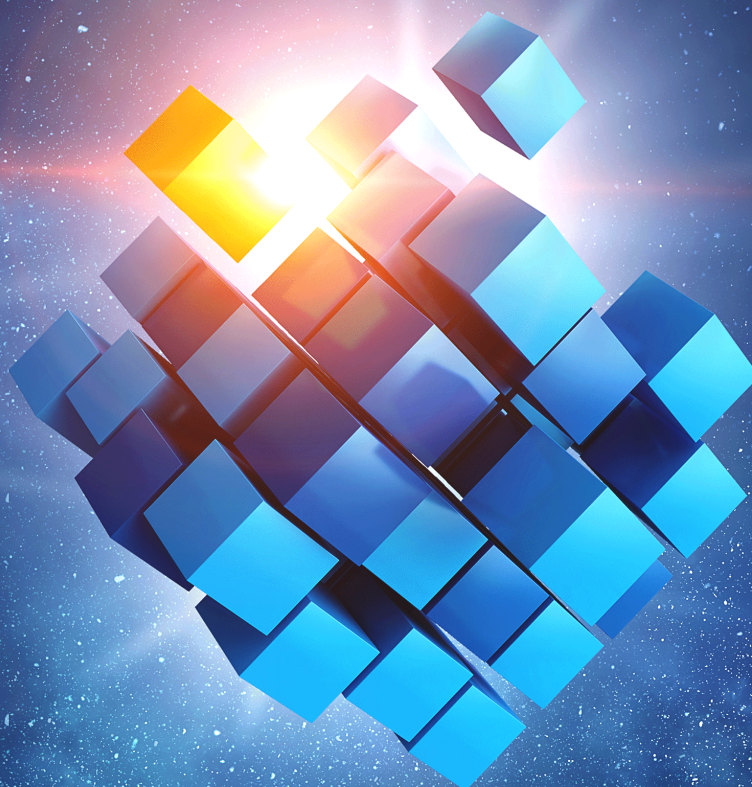




Platform for Access Lifecycle Management (PALM)

An extensible solution to simplify and automate integration of application to IAG Platforms

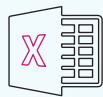


Wizard-driven IAM Application Profiling for Onboarding

PALM is a proprietary accelerator built to provide a simple and automated way of integrating Applications. It encapsulates the vision of automating application requirement collection, analysis, processing of roles and access data, writing code and configuration generation to integrate the applications with IAM solutions.

PALM is a cutting-edge cross-platform for automated application integration with IAM, available as cloud-native SaaS or on-premises. The platform's automated application integration factory model streamlines the integration process, automating tasks from requirement collection to code generation. The power combination enables streamlined deployment, reducing time-to-value and enhancing overall project efficiency.

Core Features



Wizard based
requirement
collection through a
secure Web Portal



Digital tracking of
requirement signoffs,
change control and
version history



Rapid Onboarding in
leading IAM products



Leader Dashboards,
statistics, and reporting



Why **Aujas PALM**?

PALM is a proven automation platform in real-world scenarios and playing a pivotal role for end-to-end integration of applications to IAM solutions for our clients. The platform entails a secure and efficient way to integrate applications with IAM products, effectively addressing the challenges associated with manual and traditional integration approaches.

The solution successfully tackled key challenges for the client, including:



Faster and Secure Integration

PALM significantly reduced errors and the need for rework, enhancing the efficiency of the application integration process



Addressing Access Risks and MRAs

PALM helped in identifying and addressing access risks and potential Major Risk Areas (MRAs) through insightful data analysis



Reduced RoI Challenges and Access Risks

PALM mitigated Return on Investment (RoI) challenges in IAM, reducing the risk of unauthorized access and ghost accounts



Results delivery with workforce efficiency

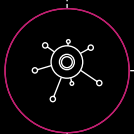
PALM delivered successful outcomes while simultaneously reducing the engineering workforce, optimizing efficiency

Benefits of **PALM**?



Increased Efficiency and Security

25% efficient access profile process and 85% efficient app integrations with IAM



Workflow Driven

Platform built with RACI (Responsible, Accountable, Consult, Inform) at its core



Part of the Ecosystem

Interconnected with other systems in the enterprise ecosystem



Accurate Access Structure

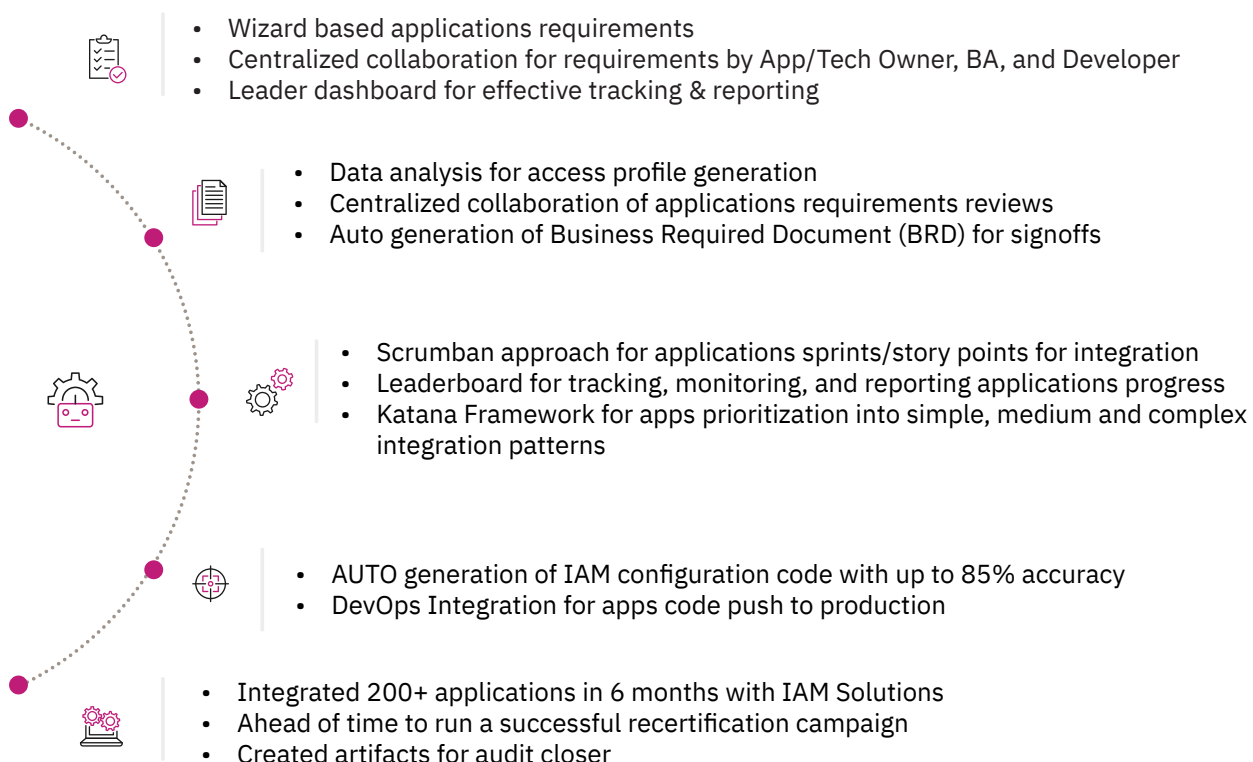
Accurate collection and representation of entitlement structure

How has this **Accelerator** helped other clients?

Aujas was engaged by a leading global bank to help it comply with long-pending IAM related regulatory compliance requirements and close the MRAs in a tight timeline.

The program goal and objective were to integrate over 200+ heterogeneous applications (Mainframe, Active Directory, LDAP, Web-based, COTS, SaaS, Homegrown, etc.) with IAM solutions with full lifecycle management of user access provisioning and deprovisioning and addressing authentication through single-sign-on.

Aujas has designed the integration factory model for apps integrations with IAM solutions and achieve the following deliverables through PALM accelerator.



About **Aujas Cybersecurity**

Aujas Cybersecurity -An NSEIT Company empowers clients with enhanced security resilience by minimizing the potential for attacks, threats, and risks. We specialize in architecture risk analysis, comprehensive threat modeling, rigorous penetration testing, and secure coding guidelines. By partnering with us, you can strengthen your security defenses and maintain a robust security posture.

For more information, visit us at www.aujas.com or write to us at contact@aujas.com.

Cupertino | Dallas | Jersey City | Ottawa | Riyadh | Dubai | Mumbai | New Delhi | Bangalore